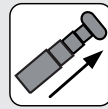


SPX 1040 CDH



4 t



4,6 - 14,5 m

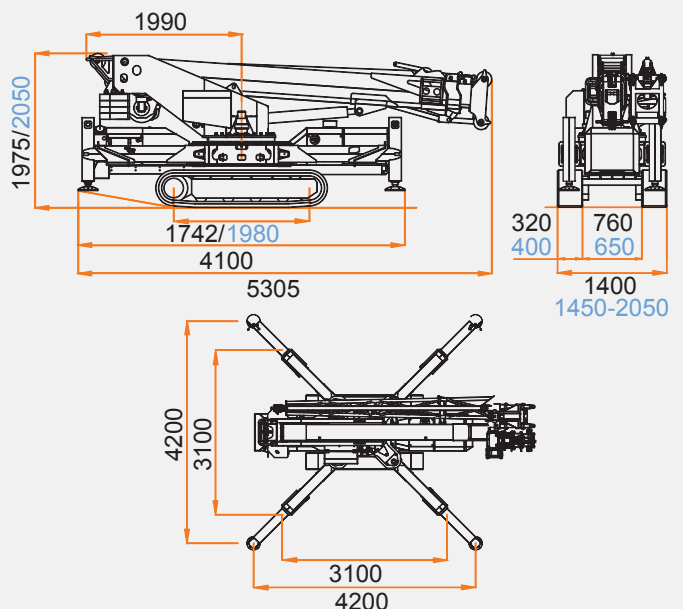


18,7 kW / 25,0 Hp
26,9 kW / 36,0 Hp



SPX 1040 CDH EXT TRACKS

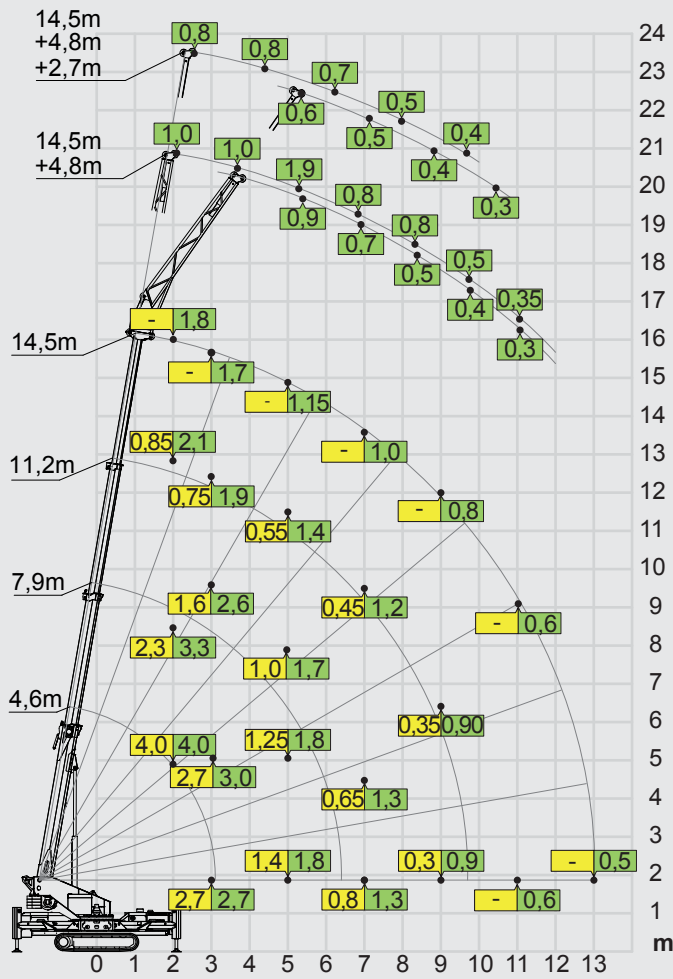
	5600 kg 6300 kg	760 kg	4T-D8: 40 kg	JIB600.2H: 220 kg JIB1000.1FL: 310 kg	
	5305x1400x1975 5305x1450x2050 mm		2,0 km/h		25°
	4500 kg		0,59 kg/cm ²		
	<p>Engine: 3 cylinders water cooled diesel, ISUZU mod. 3CB1, mod. 3CE1, 2 rpm levels, EPA TIER 4 Motore: 3 cilindri diesel raffreddato a liquido, ISUZU mod. 3CB1, 2 livelli di regime, EPA TIER 4 Motor: Wassergekühlter 3 Zylinder Diesel Motor, ISUZU mod. 3CB1, 2 rpm, EPA TIER 4 Motor: Diesel 3 cilindros con refrigeración por aire, ISUZU mod. 3CB1, 2 niveles rpm, EPA TIER 4 Moteur: Diesel 3 cylindres, refroidissement à eau, ISUZU mod. 3CB1, accélérateur à 2 niveaux, EPA TIER 4</p>				
	8kW 400V-AC 3F		50 kg		
<p>Telescopic Boom: 1 base and 3 telescopic sections high-tensile structural steel. All sections synchronized and full power. Braccio Telescopico: 1 braccio principale e 3 telescopici in acciaio strutturale ad alta resistenza. Sfilo completamente idraulico e sincronizzato. Teleskopausleger: 1 Hauptausleger + 3 Hochwiderstand Stahl Teleskopausleger. Voll hydraulischer und teleskopierbarer Ausleger. Pluma Telescópica: 1 pluma principal y 3 telescópicas en acero de alta resistencia. Elementos sincronizados e hidráulicos. Flèche Téléscopique: 1 flèche principale et 3 téléscopiques en acier à haute résistance. Eléments synchronisés et hydrauliques.</p>					
	360° 1rpm		-4°/80° 35"		
	4,6 - 14,5 m 40"		1000 kg - 125 m - Ø 8 mm 30/55 m/min.		



MAIN BOOM + JIB 1000.IFL



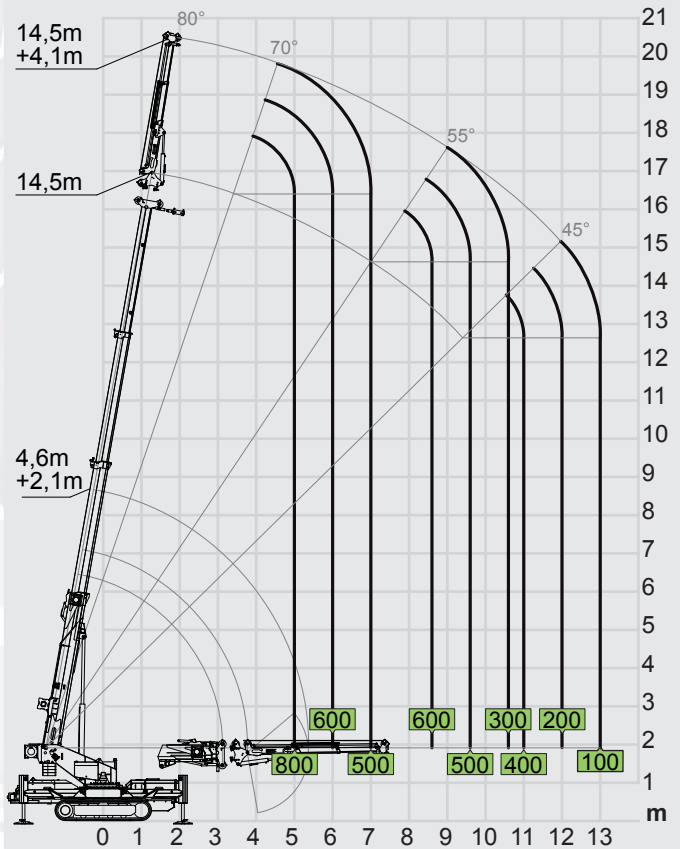
4,8 - 7,5 m



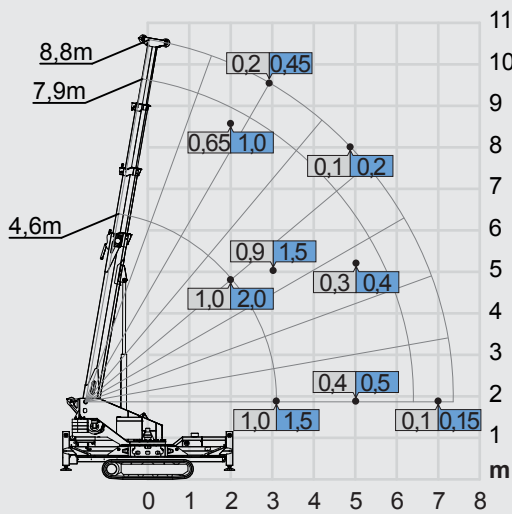
JIB 600.2H



2,1 - 4,1 m



PICK & CARRY



100% 50%
 Stab. load chart
 Tabella di carico stabilità
 Stabilität Traglasttabelle
 Tabla de carga estabilidad
 Tableau charge stabilité

Front/Back 360°
 Crawler load chart
 Tabella carico cingolo
 Raupen Traglasttabelle
 Tableau charge chenille
 Tabla de carga orugas

